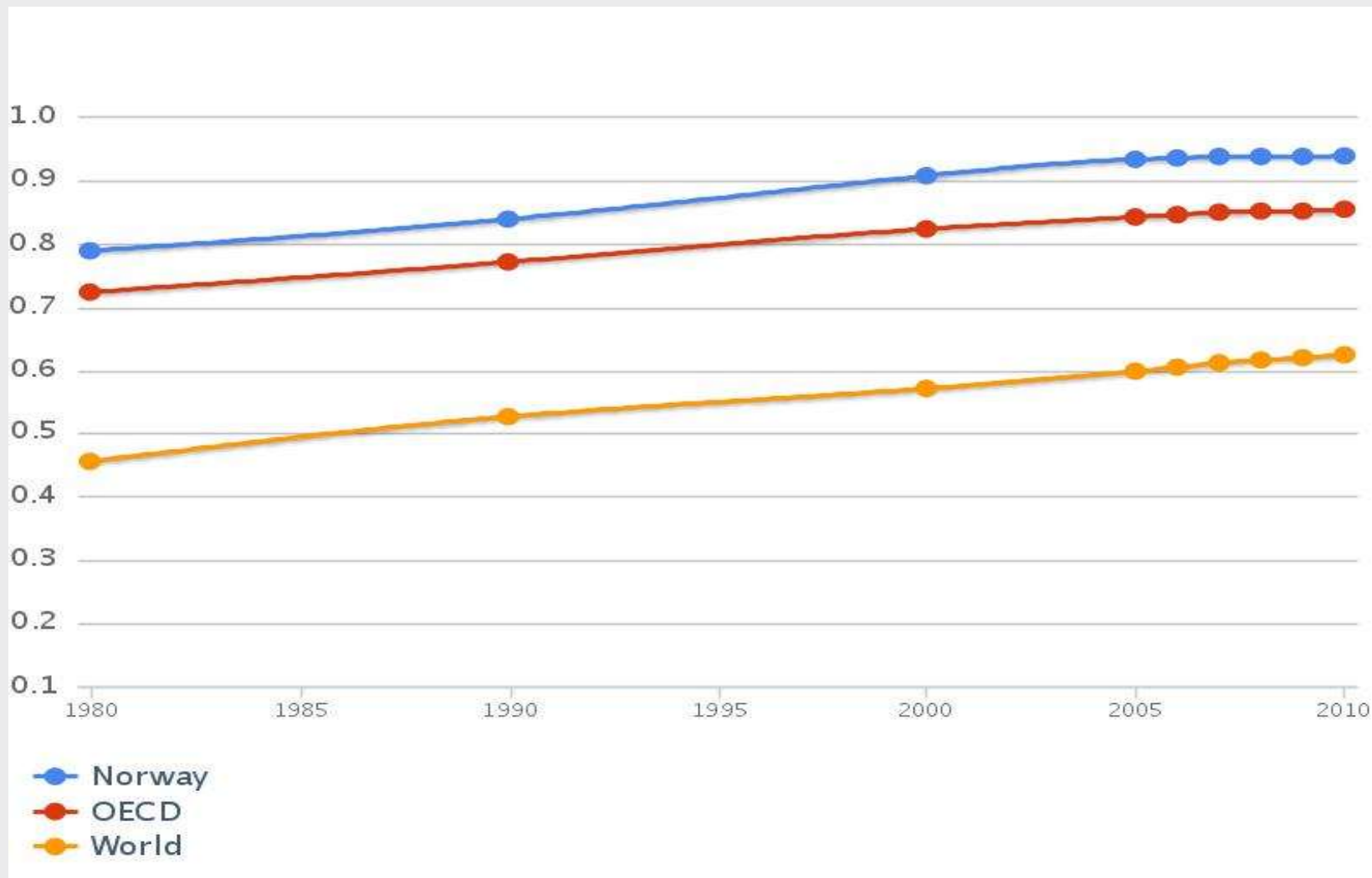
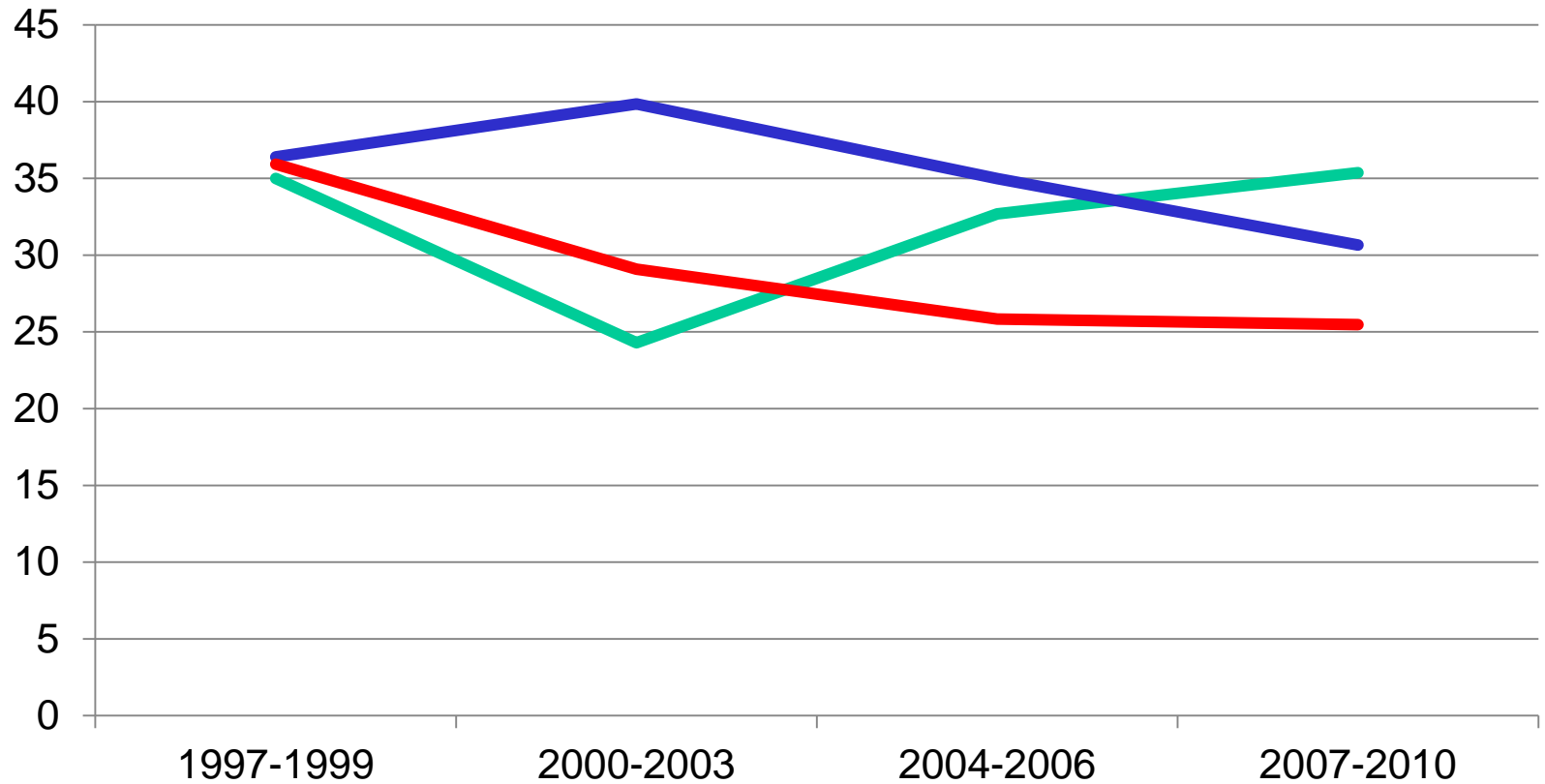




Vekst i levekår og velstand

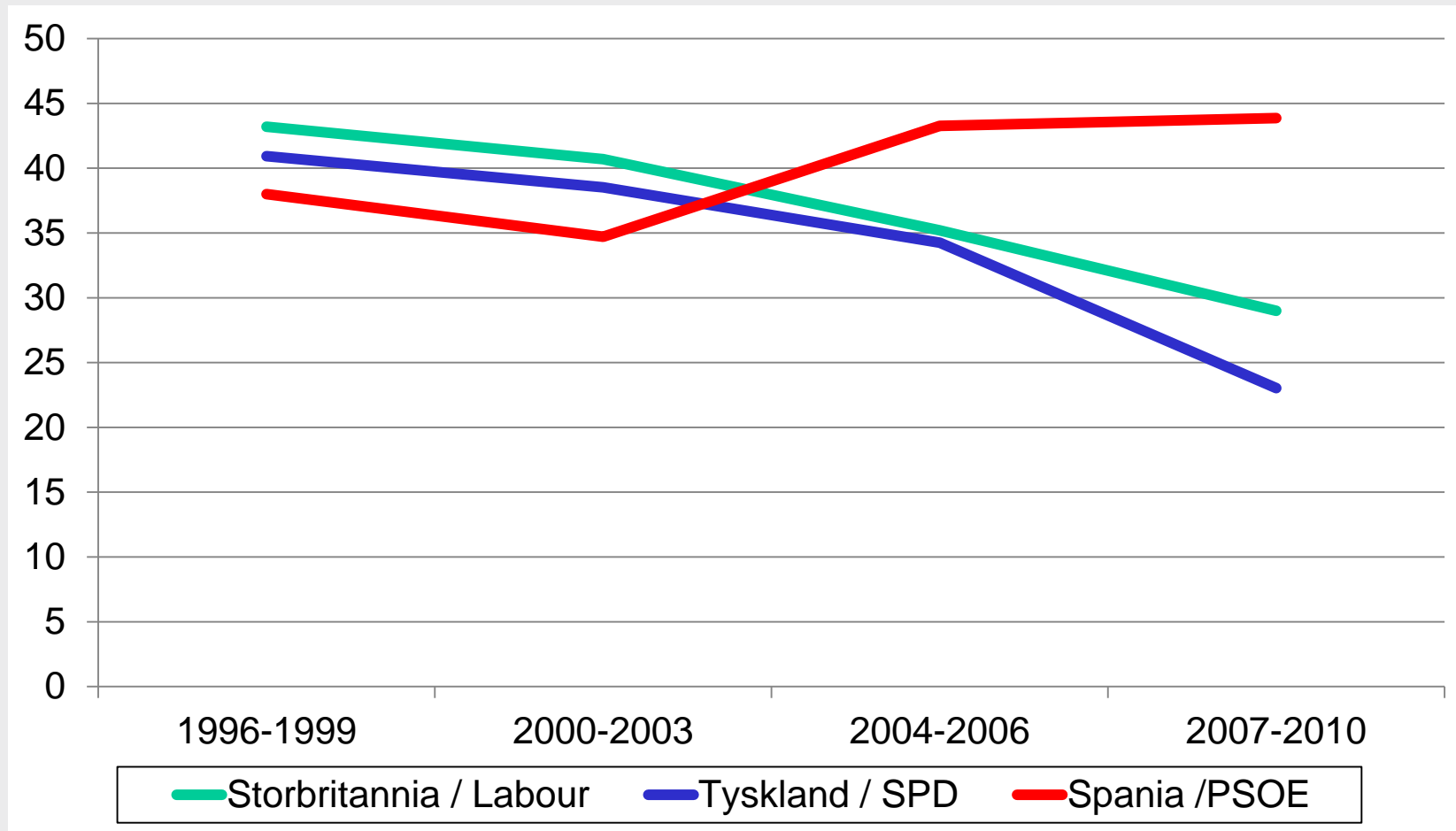


Oppslutning om sosialdemokratiske partier – fire siste parlamentsvalg - Norden

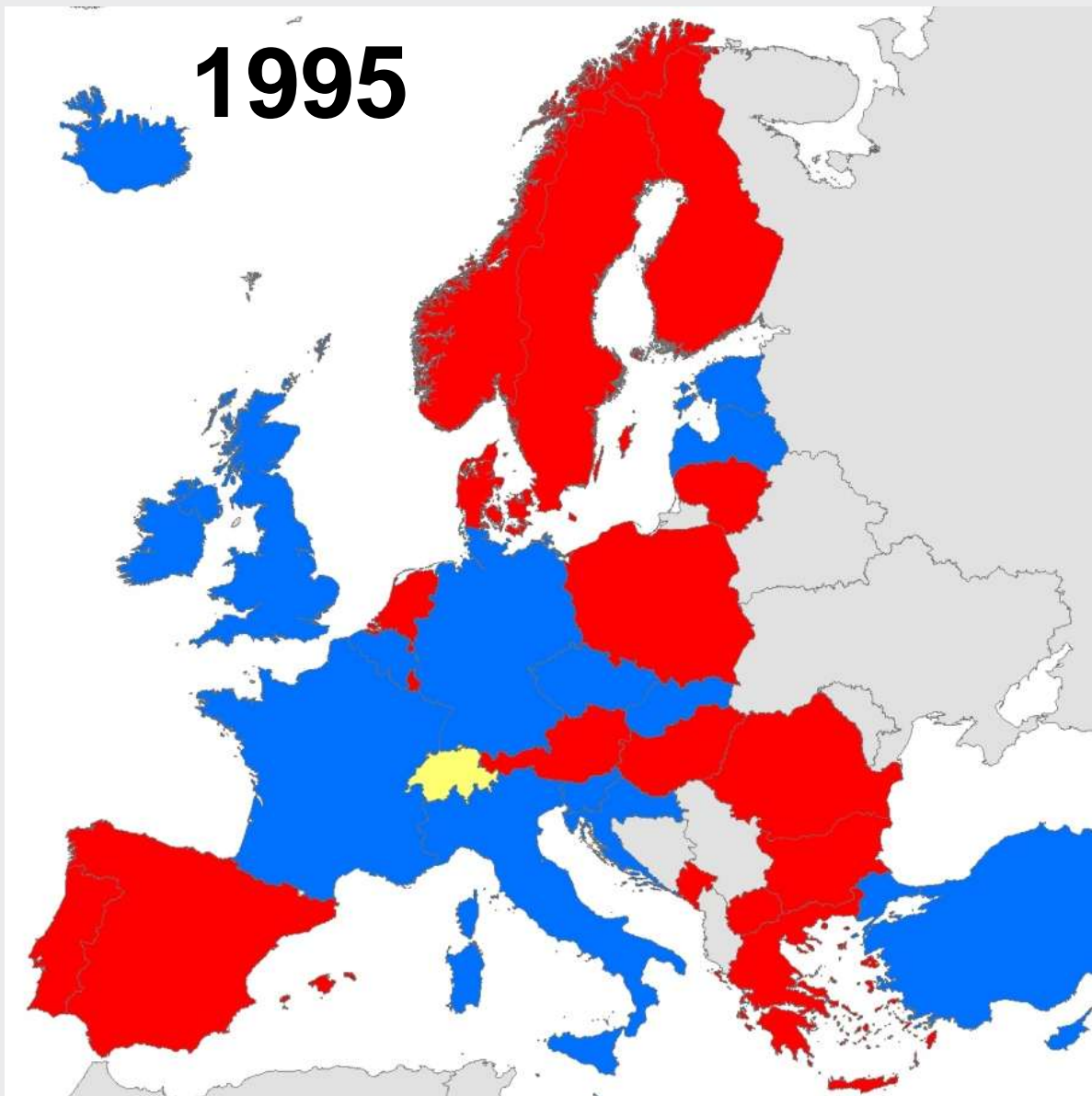


— Norge /Arbeiderpartiet — Sverige/Sosialdemokraterna — Danmark/Socialdemokratene

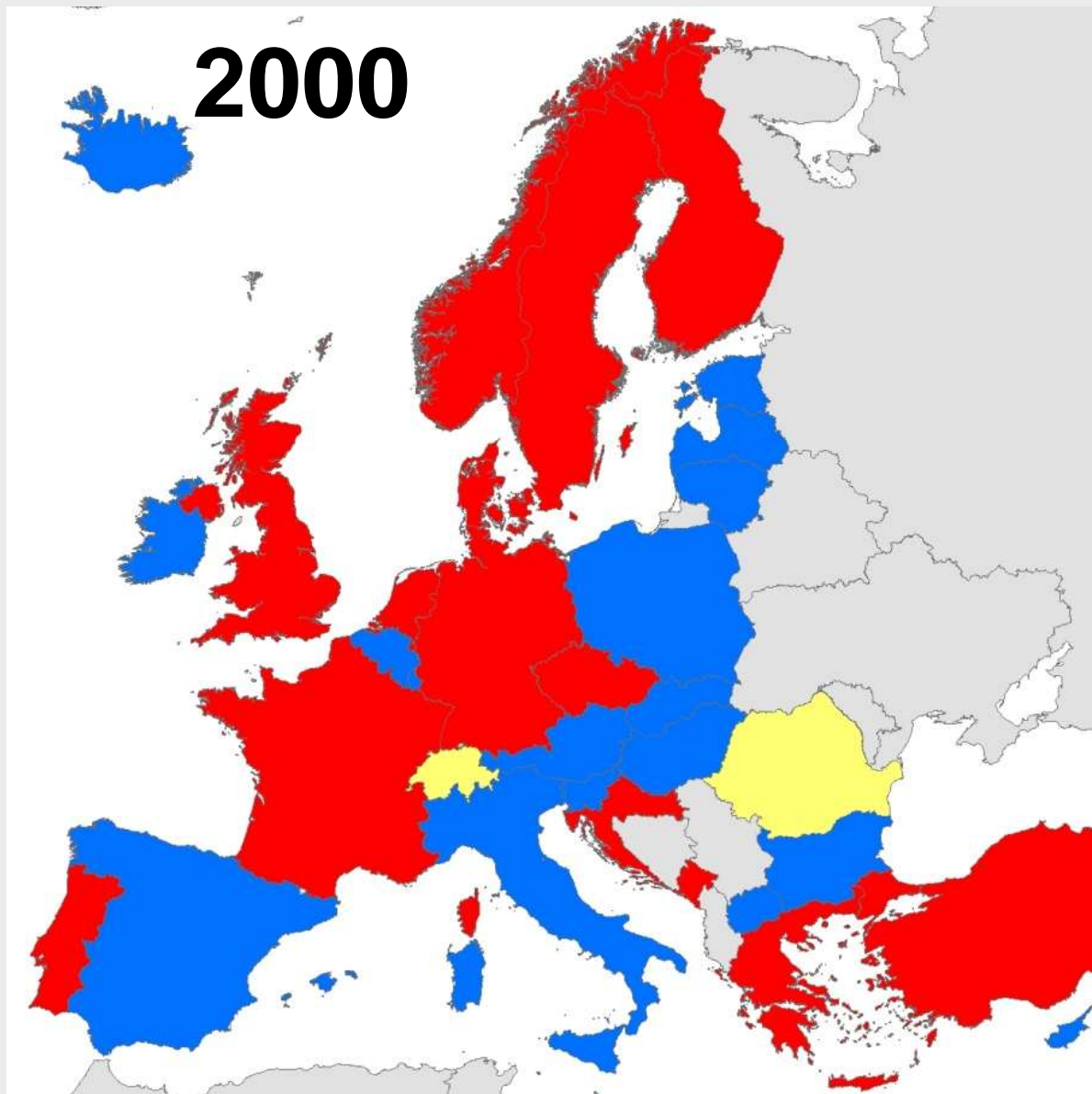
Oppslutning om sosialdemokratiske partier - tre siste parlamentsvalg - Storbritannia, Tyskland og Spania



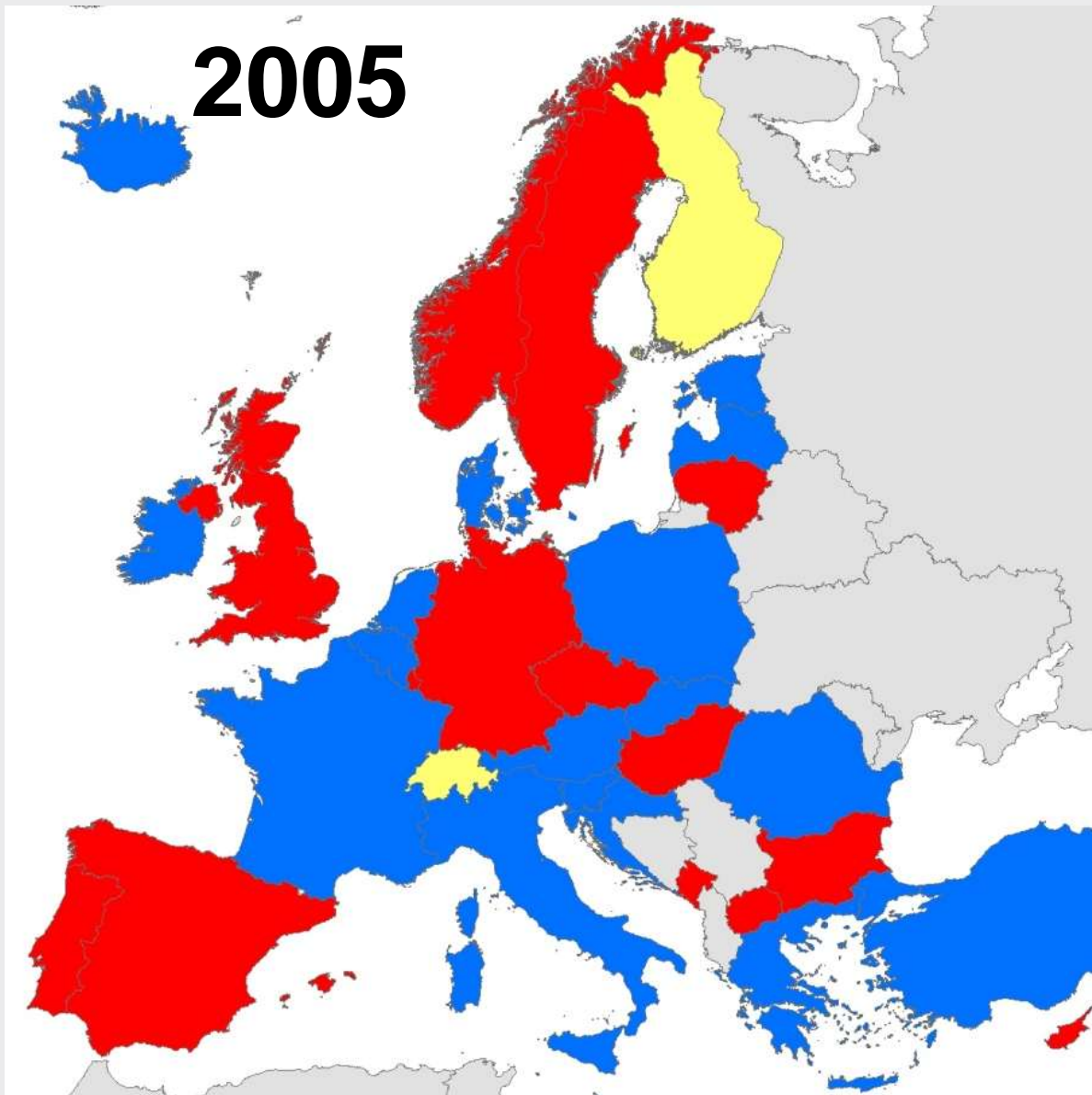
1995



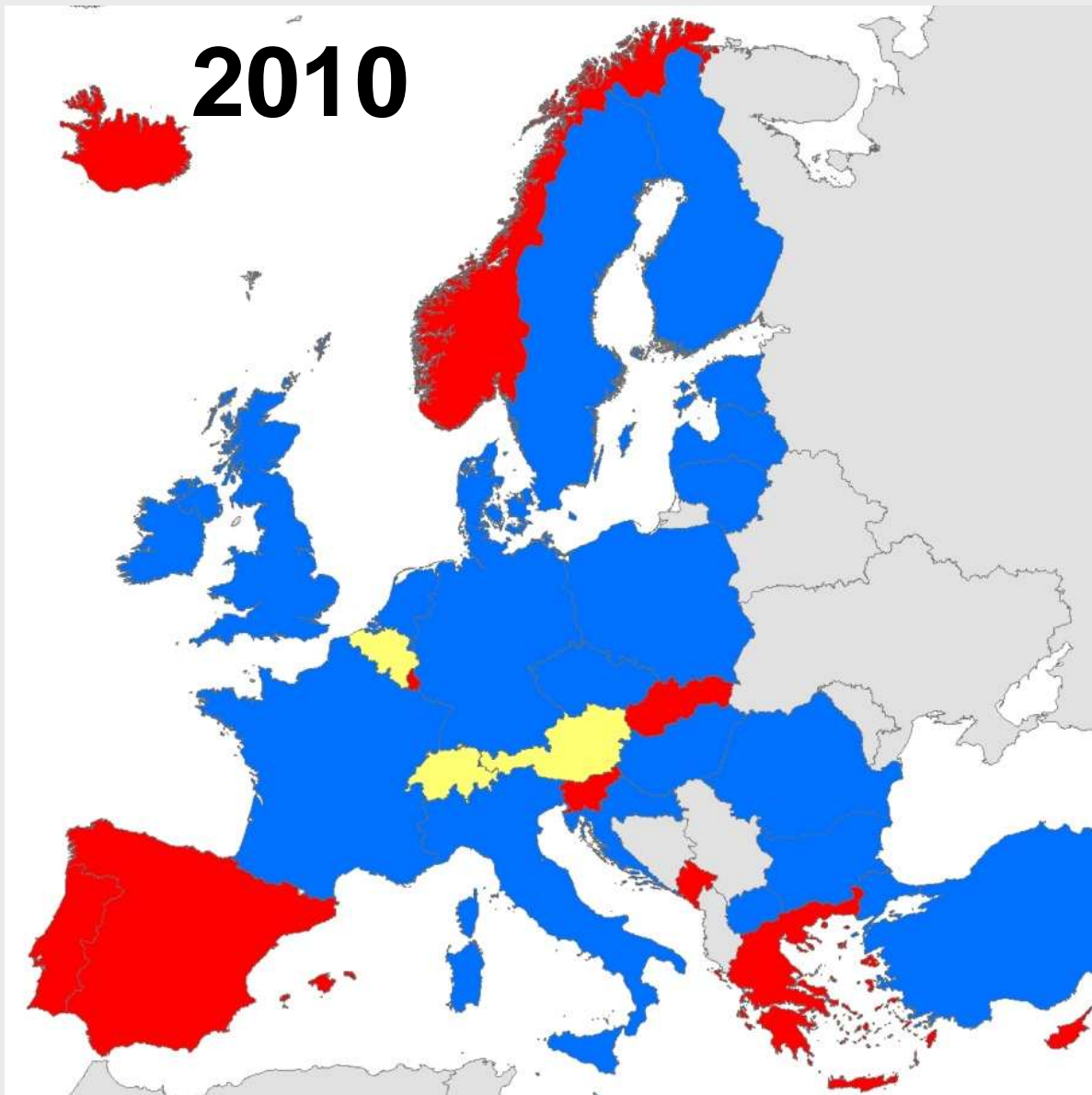
2000



2005

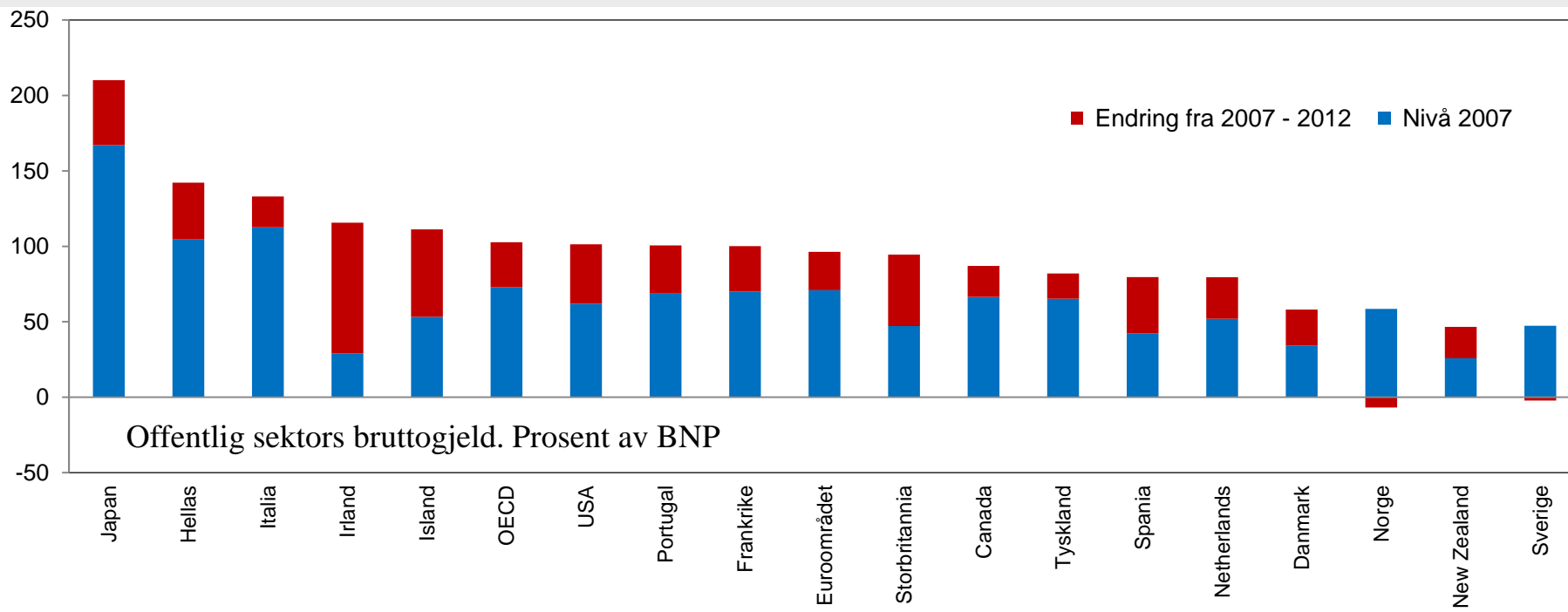


2010

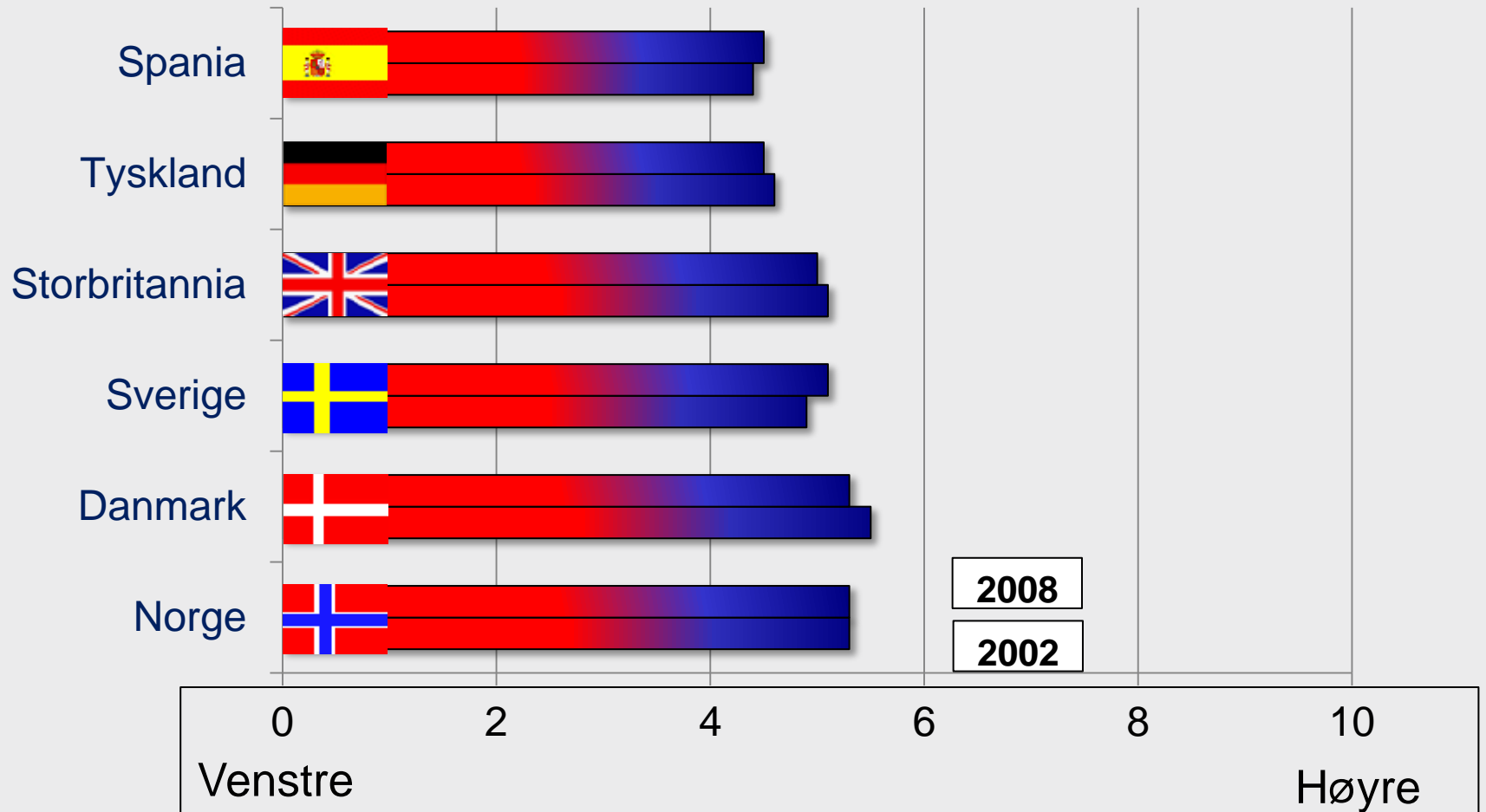


Offentlige finanser kraftig svekket

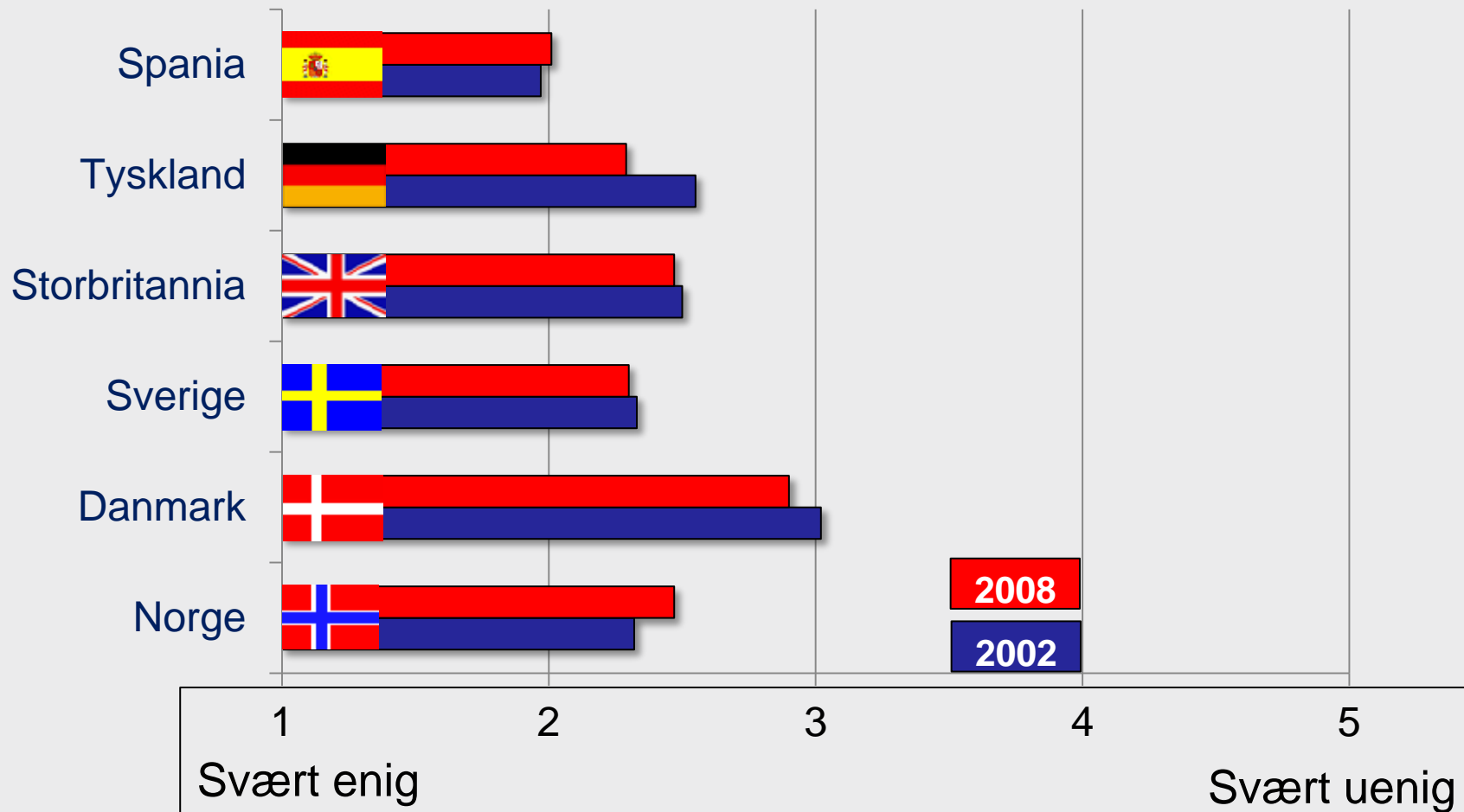
- Kostbare støttetiltak, fall i skatteinntekter, aktiv finanspolitikk
- Mange har problemer med å håndtere statsgjelden; budsjettinnstramminger og kutt i velferdstjenester



Plassering på høyre-venstreakse



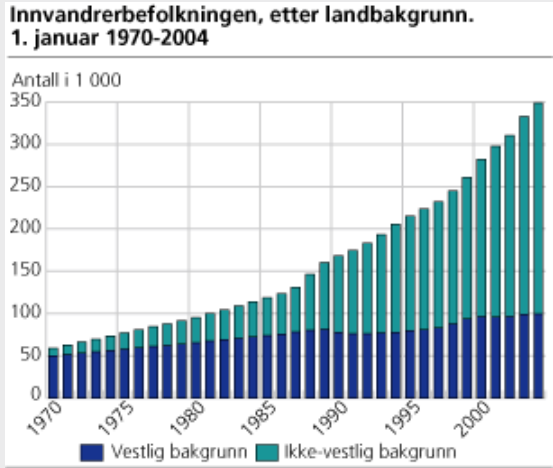
Regjeringen bør redusere inntektsforskjeller





Aldrende befolkning

Økt internasjonal konkurranse



Økt innvandring









