

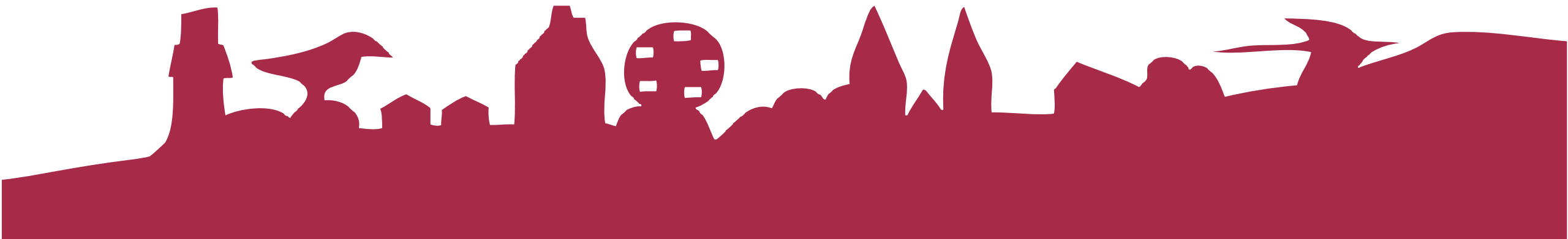


Länsstyrelsen
Västra Götaland

Integration of Newly Arrived Refugees in Western Sweden

Birgitta Guevara

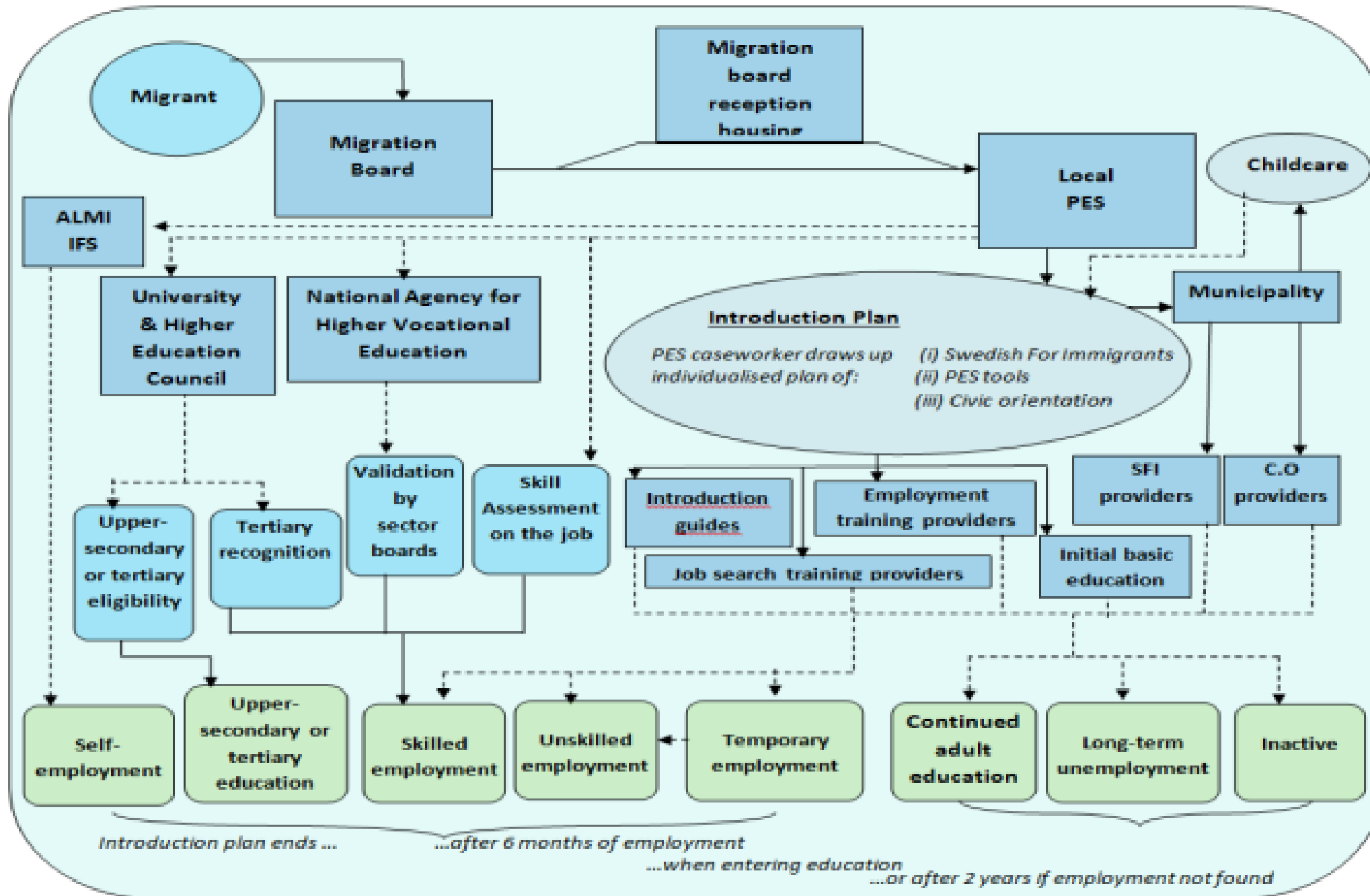
County Administrative Board of Västra Götaland



Västra Götaland 2022

- 49 municipalities
- 1,7 million inhabitants
- Both cities and rural areas
- 20 % born outside of Sweden
- 29 % born outside Sweden in Gothenburg





Source:
[OECD](http://www.oecd.org)

Challenges

- Lack of Housing
- The Labor Market and Education System
- Growing Economic Differences
- National Politics vs Local Needs
- Legislation Changes and Changes in the Public Debate



Housing Shortages 2013- 2023

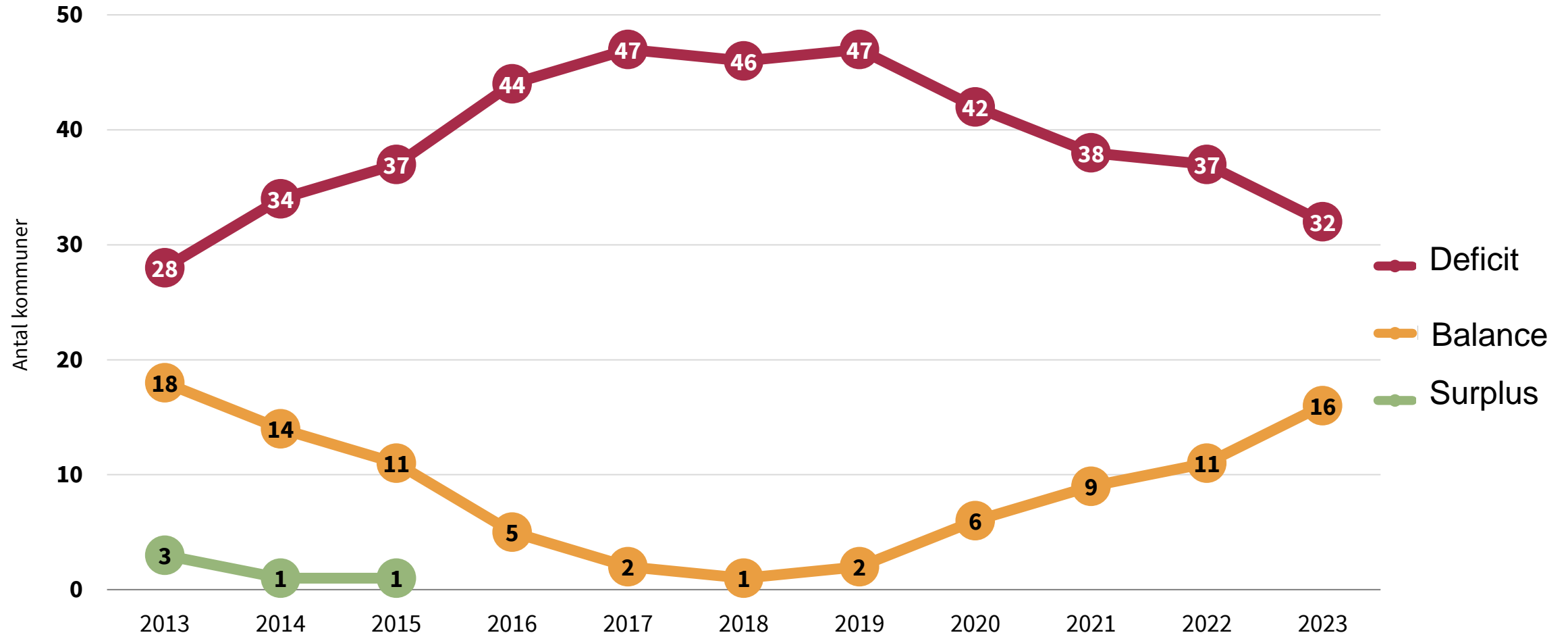




Photo of a living room, from a socioeconomically vulnerable neighborhood, in Gothenburg – 12 people live in the apartment



Challenges in the Education System

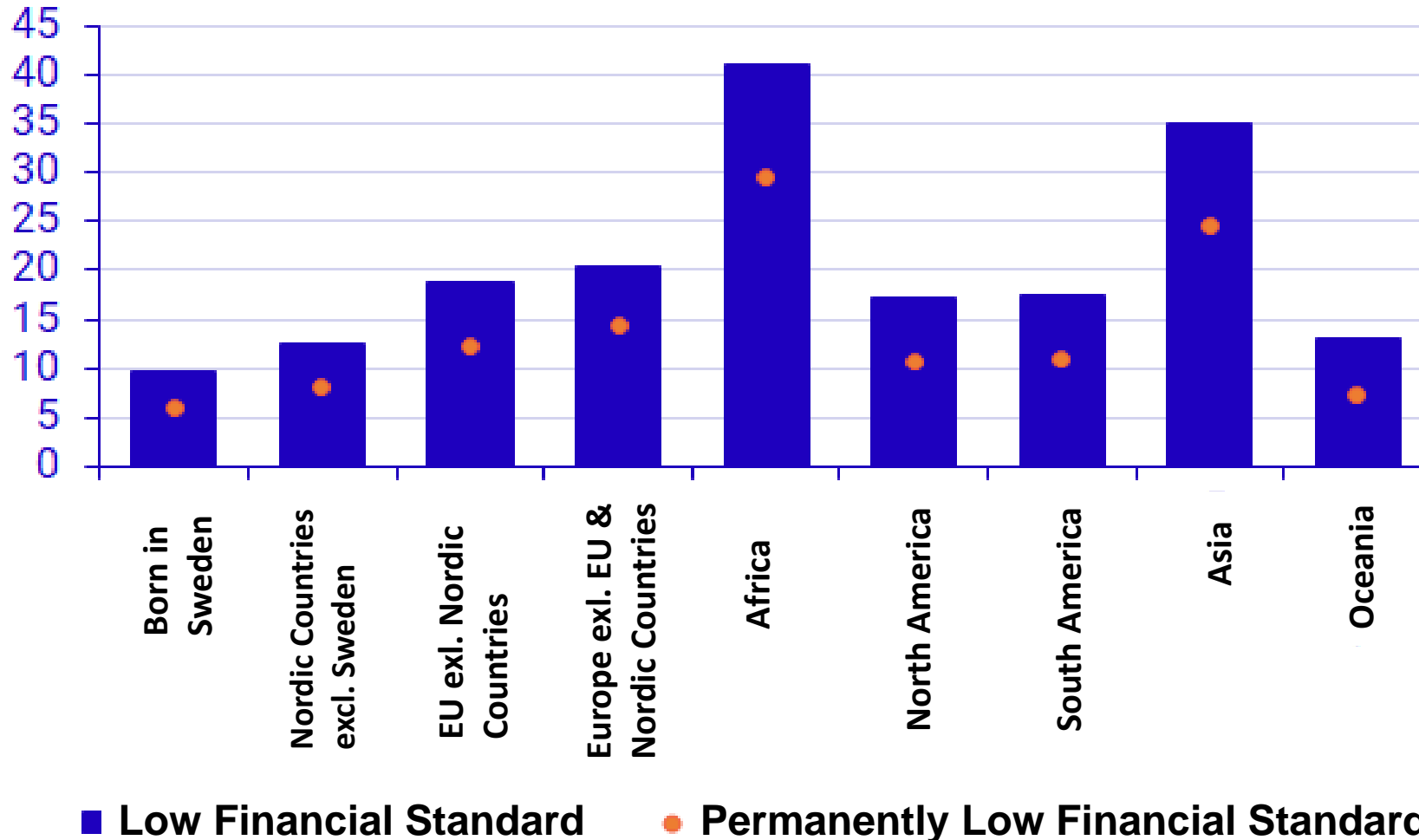
- There is a need of alternative, more practical, ways of learning Swedish for adult migrants with slow progression in the Swedish language, as well as a need to mix language classes and vocational training.
- The differences in school results have increased between pupils and schools, both in primary and secondary school.

”The students' socioeconomic background has become increasingly important for how they succeed in compulsory school. The school segregation has also increased - students with different backgrounds meet less often in school today.”

Swedish National Agency for Education

Percentage of People with Permanently Low Financial Standard in Sweden by Region of Birth 2022, in Per Cent

Procent





Challenges on the Labor Market

- The labor market situation is relatively good - BUT Sweden has a relatively few jobs that require only a shorter education

Changes in the labor politics:

- Reorganization of the Public Employment Service
- Digitization of Public Agencies in general



National Politics vs Local Needs

Recently we've started to see contradictions between the national politics and the municipal needs on the local level, especially when it comes to the need for labour in the welfare sector.

Politician

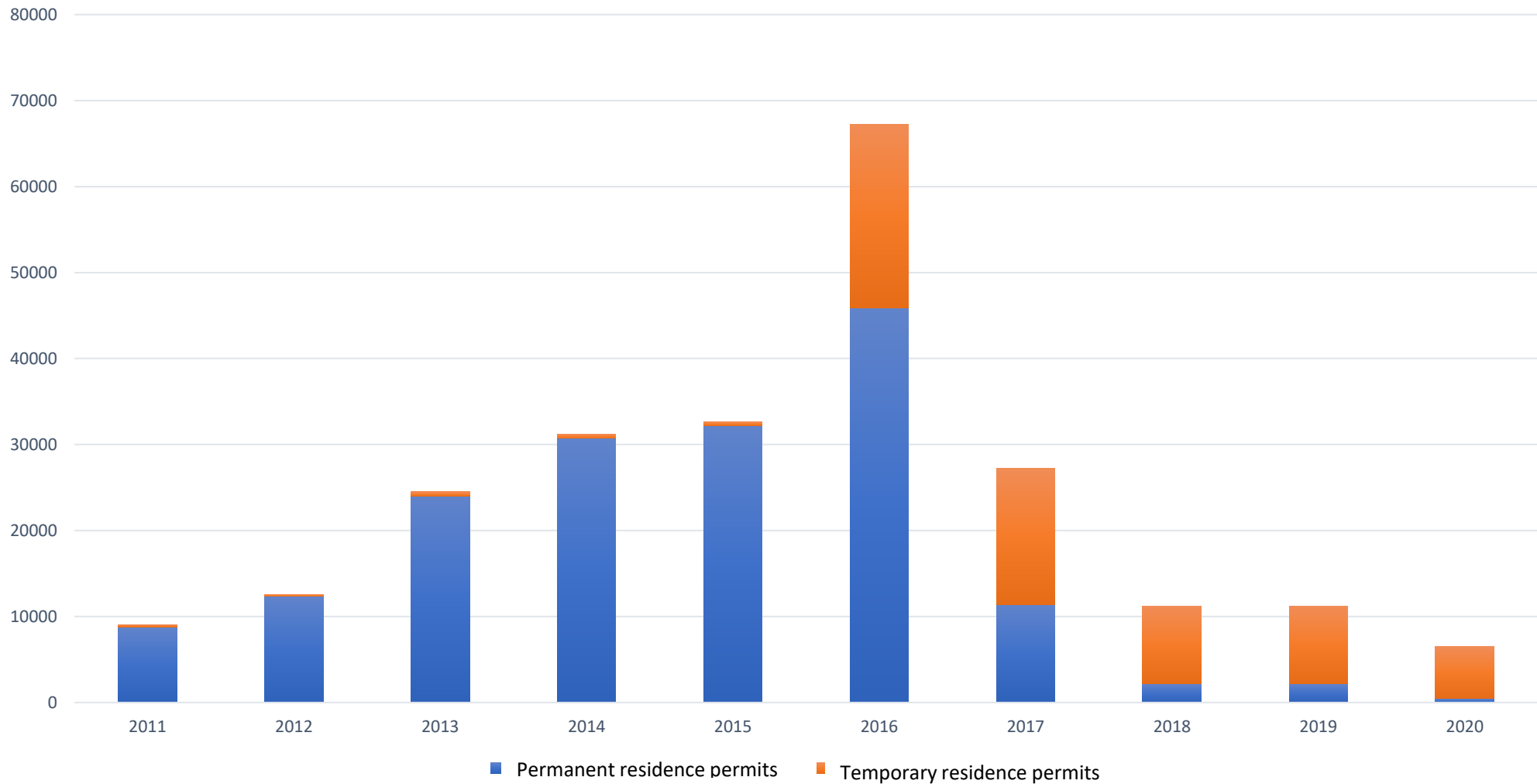
"Now I'm not saying that the staff shouldn't be able to communicate in Swedish. It is clear that they should, but comprehensible Swedish. It doesn't have to be like a test, but the debate at the national level would like it to end up there and I think that makes the debate stupid and harm rather than help."

Street level Bureaucrat

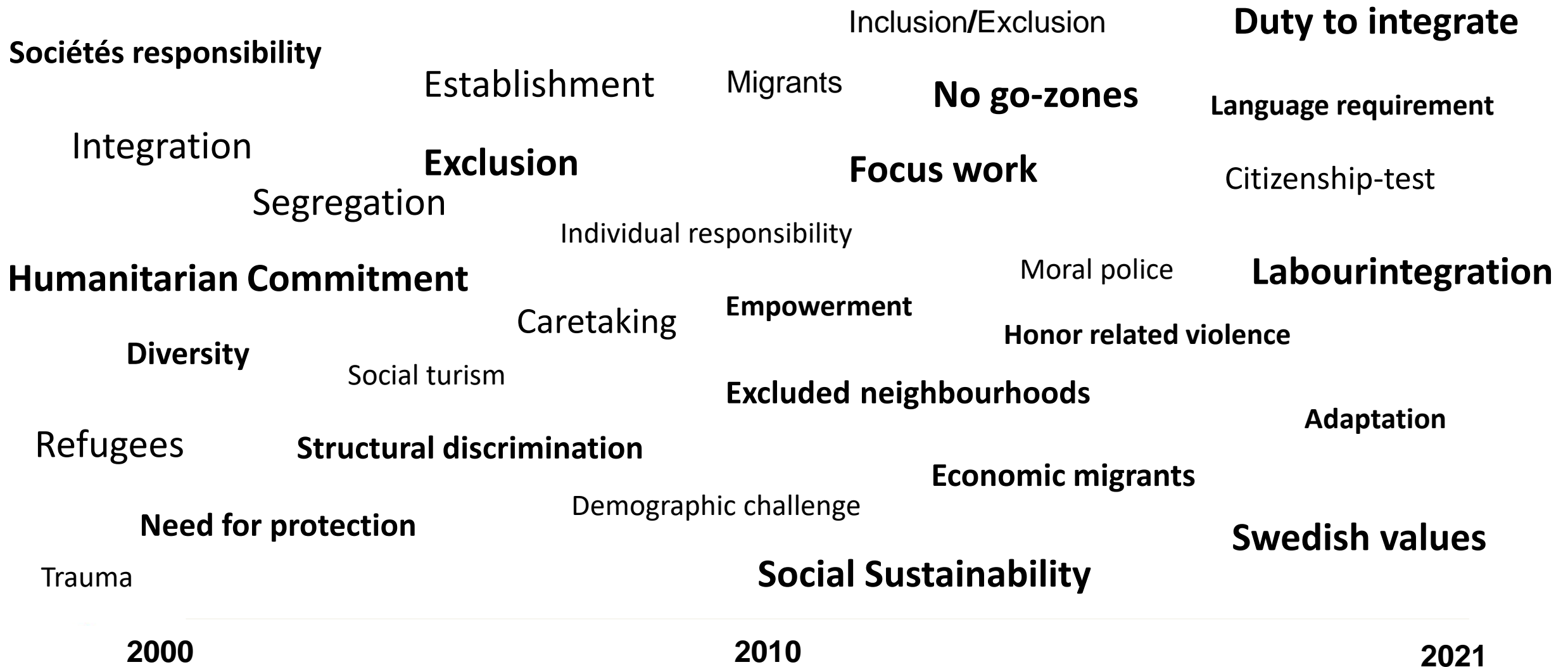
"I don't understand how politicians can miss the connection between labor immigration and maintaining high welfare. I don't understand how they can say that 'no, but we don't want any immigration. But where will your grandma and grandpa live and who will take care of them? [..] In that aspect they don't think all the way through."



Granted Asylum Applications in Sweden 2011-2020 Divided into Permanent and Temporary Residence Permits



Changed Public Debate - A Semantic Journey 2000 - 2021





Migration & asylum

- Harder to get residence permits
- Tightened conditions for relatives of immigrants to come to Sweden
- More focus on recalling residence permits
- New arrangement for asylum seekers accommodation
- Review asylum seekers right to health care
- Increased livelihood requirements for labor immigration
- Strengthen return operations
- Increased internal ID controls
- Return Center

Integration

- Knowledge requirements for permanent residence permits
- Changed goals for the integration policy
- Review the compensation for newly arrived refugees with residence permits
- Language requirements for work in elderly care
- Measures to strengthen citizenship through testes in Swedish and Civic knowledge

Education for Adults

- The National Agency for Education will map dropouts from Swedish for migrants
- Swedish to those covered by TPD
- Subsidy for Sfi to those covered by TPD

A Political Paradigm Shift